



Fact Sheet

Incoming students

International Relations Office
Faculty of Medicine

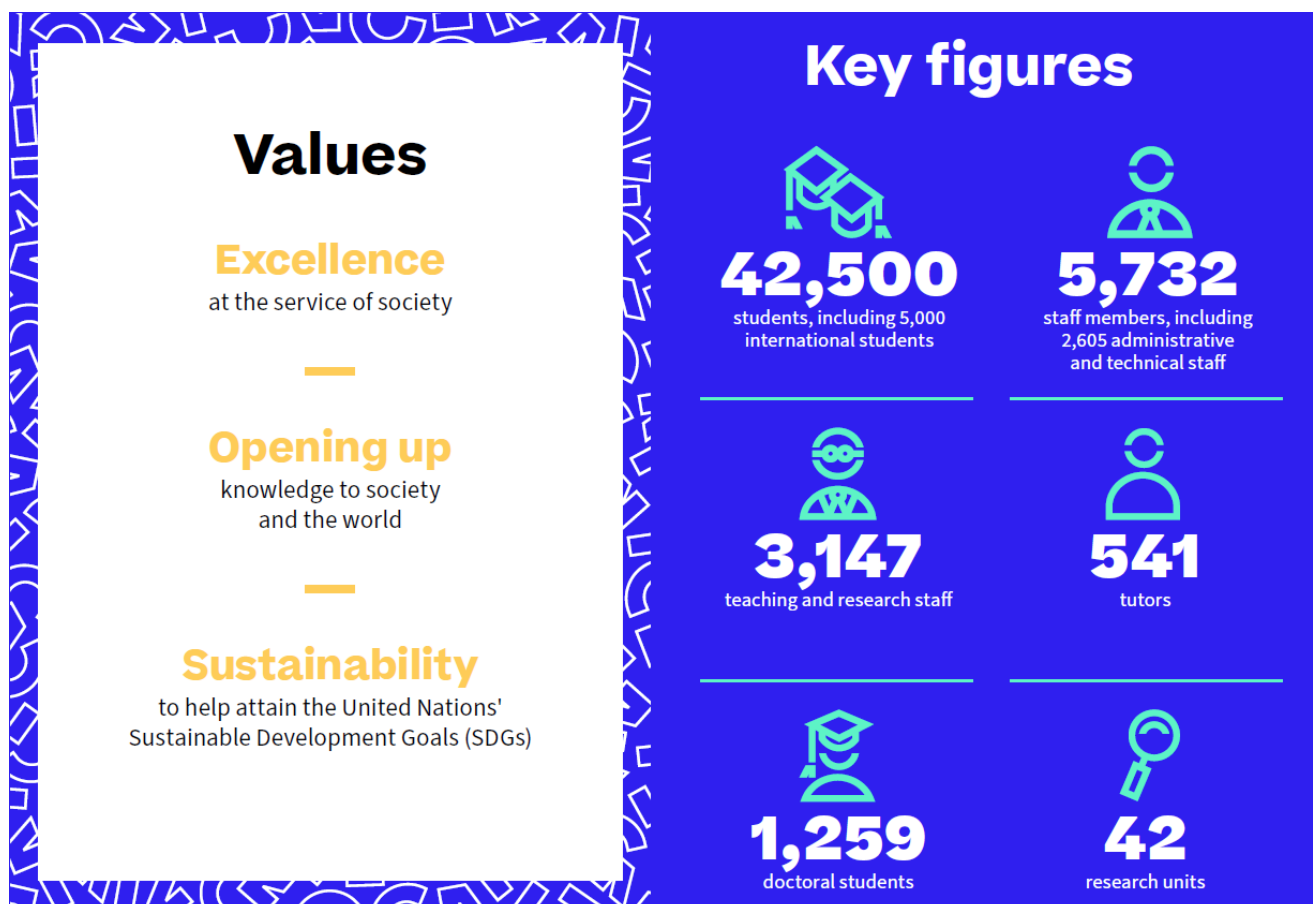


Introduction

An innovative university model

Nantes University is a higher education and research institute that offers **a unique, globally-ranked university model in France**. It brings together a university organised into faculties, three 'grandes écoles' (Centrale Nantes, School of Art Nantes Saint-Nazaire, and Ecole nationale supérieure d'architecture de Nantes), a university hospital (CHU de Nantes), a technological research institute (IRT Jules Verne), and a national research institution (Inserm).

By pooling the strengths and resources of these key players, Nantes University can **address the challenges posed by the major transitions at work in society**. Nantes University is committed to providing excellent conditions for study and work for all students and staff, to foster their personal growth across its campuses in Nantes, Saint-Nazaire, and La Roche-sur-Yon.



Welcome to Faculty of Medicine

Nantes Université

The Faculty of Medicine Nantes Université team is looking forward to welcoming you. Below is a guide to help you navigate the structure of the academic year and understand your schedule, depending on your semester or year of study.

The Faculty of Medicine is located in the city center of Nantes. Courses are hosted on the Centre-Loire Campus.



Clinical placements are either in [Hotel Dieu/Hôpital Mère-Enfant](#) (next to the Faculty) or in [Hôpital Laennec](#) (1 hour by public transport from the city center) or in [Hôpital Saint Jacques](#) (quickly accessible by public transport), depending on the medical specialty.

Academic year overview

Semester 1	Semester 2
<ul style="list-style-type: none"> Starts: Late August – Ends: Mid-December Exam period: Mid-December 	<ul style="list-style-type: none"> Starts: Early February only for incoming students – Ends: Late May Exam period: Late April
Resit exams (covering the whole academic year): Late May	

Welcome day (last week of August)

A Welcome day is organised one week before the start of the academic year, [at the end of August](#). This is an opportunity to familiarise yourself with the faculty, meet staff and fellow students, and get important information on clinical placement criteria.

3rd year medical students

Schedule

- Clinical placements:** Tuesday to Friday (mornings) on a monthly rotation (192 hours per semester = 14 ECTS)
- Courses:** Monday to Friday (afternoons)

4th and 5th year medical students

Schedule

- Clinical placements:** Monday to Friday, full-time (7 hours/day = 35 hours/week = 3,5 ECTS/month), rotating monthly. **You can have only a maximum of two months clinical placement per semester**
- Courses:** Monday to Friday, **on months when not in clinical placement**

How it works: Each group alternates between clinical placements and coursework.

Group	September	October	November	December	January	February	March	April	May
Group 1 4th year	Clinical placement	Clinical placement	Courses	Courses & Exams		Courses	Clinical placement	Courses & Exams	Resit exams (for the whole academic year) & Clinical placement
Group 1 5th year	Clinical placement	Courses	Clinical placement	Courses & Exams		Courses	Clinical placement	Courses & Exams	Resit exams (for the whole academic year) & Clinical placement

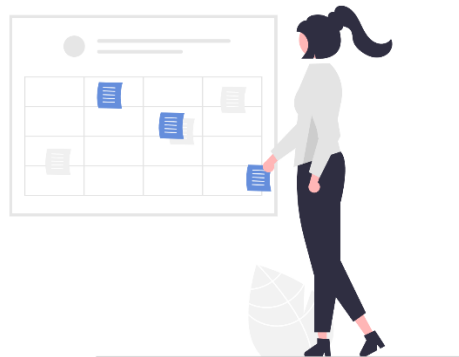
Choosing placements

- You can **choose two clinical placements per semester** (one per month) related to your studies.
- Example: If you arrive in Nantes for the 1st semester, you could do a Cardiology placement in September and an Internal Medicine placement in November.

6th year medical students

Clinical Placements

- Duration: 2 to 4 months (35 hours/week, excluding weekends & national holidays)
- Night shifts: It is possible to have less than 5 night-shift guards during a 4-month stay, if required by your home faculty



Administrative procedure

1. Before your arrival:

Once selected by your home university, you will receive a confirmation email from the Direction of Europe and International Nantes Université. This email will outline the administrative steps needed to finalise your mobility.

Please be particularly aware of the following steps while filling out your candidature on Mobility Online:

- Housing
- French support classes
- Booking an appointment at the Guichet Unique upon your arrival
- Learning Agreement

For further information click [here](#).

To select your courses, choose from the catalogue according to your home university's requirements. Prioritise courses for the semester of your mobility, as the Faculty of Medicine Nantes Université can not guarantee all courses in case of scheduling conflicts.

For clinical placements, send a list of five preferences in advance. The International Relations Office will allocate two months of placements per semester (e.g., one month in Cardiology and one month in Internal Medicine). These placements will not be specified in your Learning Agreement.

Please submit your Learning Agreement to the Faculty of Medicine's International Relations Office for approval. Once signed by all three parties via the [Online Learning Agreement](#) (OLA) platform, download it as a PDF and upload it to Mobility Online.

One month prior to your arrival, you have to provide the following documents to international.medicine@univ-nantes.fr:

- Learning Agreement signed
- A copy of your liability insurance
- A copy of your professional liability insurance (required to enter an operating bloc and hospital area)
- EU Social Security Card (if applicable)
- Attestation on vaccination

2. Upon your arrival:

- Check in at the Guichet Unique to complete your initial formalities and get any practical information you need.
- Stop by the International Relations Office at the Faculty, where we'll officially welcome you! During your visit, you will:
 - Receive your student card — don't forget to activate it within 24 hours.

- Get your Hospital Attendance Sheet, which must be signed and stamped by your clinical tutor 3 days prior to the end of your clinical placements.
- Be guided to collect your GAIA card at CHU de Nantes, giving you access to hospital areas.

Absences:

- September–April: You may take 2 days off per month during clinical placements (these days cannot be transferred to another month).
- May–August: You must take 5 days off per month during clinical placements (these days cannot be transferred to another month).
- To request a day off, email your clinical placement coordinator/tutor and copy in the International Relations Office at least one week in advance for approval.
- In case of health issues you can contact [Students Health Services](#).

3. During your mobility

The International Relations Office of the Faculty of Medicine and the International Relations Office of Nantes Université are available for support, whenever needed. Please note that you can modify your Learning Agreement until the end of September and February only.

4. Before your departure

Please book an appointment with the International Relations Office of the Faculty of Medicine 10 days before leaving to your home country, to complete administrative formalities (e.g., confirmation of stay and document uploads on Mobility Online).

5. After your mobility

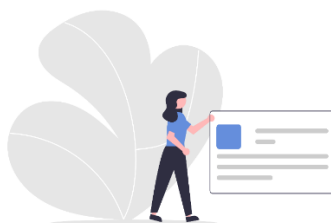
The International Relations Office of the Faculty of Medicine will send you the Transcript of Records within one month, allowing you to validate your courses with your home university. Please note that some course units are divided into Part 1 and Part 2 and each part has its own notes. The interpretation of these notes are entirely depending of the home university if question of average.



Mobility Data Sheet

Faculty of Medicine Nantes Université

Name of the Institution	Nantes Université	Faculty	Faculty of medicine
ERASMUS ID-Code	F NANTES01	Address	Bâtiment 02, VEIL 1 quai de Tourville 44036 NANTES Cedex 1
Nantes Université Website	click here	Faculty Website	click here
Head of Nantes Université	Pr Carine BERNAULT	Dean of Faculty of Medicine Nantes Université	Pr Antoine HAMEL
Direction Europe and International	click here	Administrative Coordinator	Zsafia SFORZA
		Academic Coordinator	Dr Rose-Anne LAVERGNE
		Mail	International.medecine@univ-nantes.fr
		Clinical placements	CHU de Nantes
		Address	1 place Alexis-Ricordeau 44093 Nantes Cedex 1
		CHU de Nantes Website	click here



Course catalogue for 3rd year medical students

1st semester

Semester 1	DFGSM3 – 3 rd year medical studies - Nantes			
	Code	Module	ECTS	Nb of hours
	M35SMIM	Immunopathology	3	21
	M35SMNU	Nutrition	3	20
	M35SMGE	Genetics	4	26
	M35SMI1	Infectiology : Bacteriology and Virology	3	39
	M35SMEP	Epidemiology and Public Health	3	39
	M36SMAF	First Aid Certification	Mandatory	
	M35SMST	Clinical placement	14	192
	TOTAL		30	

*Exams consist of different types of questionnaires (simple-choice, multiple-choice, etc.), taken at the end of each term. Please prioritise courses for the semester of your mobility, as the Faculty of Medicine cannot guarantee all courses in case of scheduling conflicts.

2nd semester

Semester 2	DFGSM3 – 3 rd year medical studies - Nantes			
	Code	Module	ECTS	Nb of hours
	M36SMHS	Human and Social Sciences	3	38
	M36SMHO	Endocrinology	2	24
	M36MRE	Reproduction	2	18
	M36SMTM	Introduction to pharmacology	3	28
	M36SMBI	Biochemistry	2	14
	M36SMSI2	Infectiology: Parasitology and mycology	2	17
	M36SMST	Clinical placement	14	192
	TOTAL		30	

*Exams consist of different types of questionnaires (simple-choice, multiple-choice, etc.), taken at the end of each term. Please prioritise courses for the semester of your mobility, as the Faculty of Medicine cannot guarantee all courses in case of scheduling conflicts.

Course catalogue for 4th year medical students

1st semester

Semester 1	DFASM1 – 4 th year medical studies - Nantes				
	Code	Module	Nb of hours	ECTS	Module content
	MAAPEXM	Introduction to medical exercise	11.5	1	
	MASPSHS	Public Health & Human Social Sciences	20.5	2	
	MAGYNP1	Gynaecology - Part 1	17.5	2	Pre-eclampsia, Placenta abruption, Stunted intrauterine growth, Preterm delivery, Pregnancy-related acute abdominal pains, Pelvic pain Pelvic mass (cysts, fibromas), Risk factors and prevention of HPV infections, Genital haemorrhage, Normal pregnancy, Down's syndrome, Normal delivery, Breast-feeding, Post-partum disorders, Haemorrhage of delivery, Gestational diabetes, Psychiatric disorders during pregnancy, Pregnancy and nutrition, Ectopic pregnancy, Miscarriages Abortion, Allo-immunisation, Upper genital tract infections / STD, Violence against women.
	MAPSYP1	Psychiatry - Part 1	21.5	2	Psychiatry: introduction; Panic attack, acute agitation, suicide risk; Psychotic disorders; Mood disorders, mourning; Anxiety, personality disorders, somatoform disorders; Precariousness, Pain, Psychic disability; Treatment without consent, Psychotherapy; Psychotropic drugs; Psychiatric disorders in the elderly; Sexuality; Psychiatric disorders during pregnancy and post-partum.
	MASNEP1	Neurology - Part 1 CC**	13.5	1	Medullary compression; Guillain Barré syndrome/myasthenia gravis; Polyneuropathy; Traumatic brain injury: rehabilitation; Parkinson's disease; Multiple sclerosis; Stroke; Intracranial haemorrhage; Epilepsy, loss of consciousness; Nervous system tumour; Traumatic brain injury.
	MADERP1	Dermatology - Part 1	9.5	1	Allergies; Skin, bacterial and fungal infections; Pruritus; Facial dermatoses (acne, rosacea, seborrheic dermatitis); Skin melanocytic tumour, Erythema nodosum.
	MAPOUP1	Pneumology - Part 1	13.5	1	Pleural effusion, Pneumothorax, Chronic obstructive pulmonary disease, Sarcoidosis, Asthma (in adults), Thoracic mass, Primary lung tumours.
	MACARP1	Cardiology - Part 1	17.5	2	Introduction, Semiology; Heart murmur in children; Sex, gender and inequalities in access to healthcare; Arterial hypertension: physiopathology, classification, treatment/management; Aortic dissection, Bypass; Atheroma: physiopathology, prevention; Coronary syndromes; Treatment for arterial hypertension, for atheroma, coronary heart diseases; Clinical case studies.
	MACVAP1	Vascular system - Part 1	9.5	1	Haemostasis and coagulation; Chronic venous insufficiency; Venous thromboembolism: Deep vein thrombosis, Pulmonary embolism, Treatment.
	MAENUP1	Metabolism: Endocrinology / Nutrition - Part 1	17.5	2	Diabetes: Diagnosis, types, risk factors; Gestational diabetes; Diabetes: acute complications, diabetic foot; Type-2 diabetes: Diagnosis, Management / treatment, Macrovascular complications; Type-1 diabetes: Diagnosis, Management / treatment, Microvascular complications, Insulin therapy; Obesity; Lipids.
	MAMUROL	Metabolism: Urology	20.5	2	Urinary lithiasis, Haematuria; Anuria, Acute retention of urine; Benign prostatic hyperplasia; Micturition abnormalities, Urinary incontinence; Genital infections in men, Scrotal pathology, Andrology.
	MAMEDP1	Pharmacology - Part 1	33.5	3	Medication for pulmonary diseases; Medication for diabetes; Medication for angina; Diuretics, Insulin; Variations in benefit risk ratio; Medication for Alzheimer's disease; Medication for multiple sclerosis; Medication for arterial hypertension; Medication for heart failure; Antivirals; Medicines used in urology; Lipid-lowering agents; Antimigraine agents; Medication for thyroid diseases; Medicines used in gastro-enterology; Toxicology; Haemostasis; Drug toxidermia; Iatrogenic disorders and phytotherapy; Principles of integrative medicine, Usefulness and risks of alternative treatment methods, Therapeutics.
	MASTA07	Clinical placement	320	7	2 months
		TOTAL	526	27	

*Exams consist of different types of questionnaires (simple-choice, multiple-choice, etc.), taken at the end of each term. Please prioritise courses for the semester of your mobility, as the Faculty of Medicine cannot guarantee all courses in case of scheduling conflicts.

2nd semester

DFASM1 – 4 th year medical studies - Nantes				
Code	Module	Nb of hours	ECTS	Module content
MAPEDP1	Paediatrics - Part 1 CC**	32	3	Preterm birth, Stunted intrauterine growth, Neonatal jaundice; Care for newborn babies, Breastfeeding, Prevention of foetal risks; Feeding and nutritional requirements in new-born babies and children, Obesity, Undernourishment; Acute fever, Urinary tract infection; Fever and rash; Acute bronchiolitis, Acute pneumonia, Pertussis; Cardiac and respiratory distress, Septic shock, State of shock in children; Acute respiratory distress; Medical follow-up from birth to adolescence : Compulsory tests; Abused children, children at risk; Pain management in children, Sedation and analgesic treatment, Palliative care; Confused state and disorders of consciousness, Seizures, Serious discomfort, Sudden infant death syndrome; Anti-infective drugs, Bone and joints infections, Tuberculosis; Bacterial and viral meningitis and meningoencephalitis in children; ENT infections : rhinopharyngitis, tonsillitis, otitis, sinusitis; Immunisation, Infectious diseases in migrant children and returning travellers, Malaria.
MADOUSP	Pain treatment, palliative care	19	2	Pain : neural bases, Assessment of pain in patients without cancer, Doctor - patient objectives agreement; Treatment of pain in patients without cancer : guidelines and precautions for use of analgesics (opioid, non-opioid), Management of psychotropic, anticonvulsant and antidepressant drugs for pain relief; Multidisciplinary management of cancer pain (analgesics, treatment methods); Clinical approaches to major symptoms in palliative care (dyspnoea, digestive symptoms); The end of life stages; Palliative care : organisation, legal aspects.
MAHAMPR	Handicap and Rehabilitation	21.5	2	Disabilities: assessment, epidemiology; Walking and equilibrium disorders; Bedsore complications; Rehabilitation, Nutrition of athletes; Child handicap; Medical equipment and devices of physical therapy; Physical activity and lifestyle; Law and handicap.
MAMTRP1	Infectious diseases - Sanitary risks - Part 1	25	2	Fever, diarrhoea, in returning travellers; Urinary infections; Vaccines; Respiratory infections; Malaria; Sexually transmitted infections; Cutaneous infections in returning travellers; Infection after a bite, Zoonosis, Lyme disease; Antibiotic treatment; HIV and AIDS; Bone and joint infections.
MAHGEP1	Gastroenterology - Part 1	20.5	2	Cirrhosis; Icterus, Lithiasis; Viral hepatitis; Digestive haemorrhage; Hepatomegaly, abdominal mass, Liver tumours; Peptic ulcer, Gastric reflux; Irritable bowel syndrome, Surgery in colorectal cancer; Obstructive syndrome; Hernia and Ruptures, complications; Infections (diverticulitis, appendicitis, peritonitis); Biliary lithiasis, Pancreatitis.
MAHGEP1	Emergency - Part 1	16.5	1	Discomfort, loss of consciousness, seizures in adults; Acute respiratory distress and failure, Pneumothorax; Cardiocirculatory arrest; Knee, ankle and shoulder joint and ligament injuries, Prostheses and osteosynthesis, Frequent fractures in adults and elderly people, Medical observation of a patient with a plaster cast, complications; Acute infections of soft tissues, Acute big red leg; Obstructive syndrome, Digestive haemorrhage, Appendicitis in adults and children, acute peritonitis and pancreatitis; Strokes, Subarachnoid haemorrhage; Acute Coronary Syndromes.
MALCAP1	Critical Analysis of Medical Articles - Part 1	13.5	2	
MALOCP1	Musculoskeletal system - Part 1	16.5	2	Frequent fractures in adults and elderly people; Medical observation of a patient with a plaster cast; Osteoporosis; Knee, ankle and shoulder joint and ligament injuries; Osteoarthritis; Rachialgic; Radiculalgia; Ankylosing spondylitis; Rheumatoid arthritis.
MAODIP1	Diagnostics - Part 1	13.5	1	Vertigo; Jaundice: haemolytic, cholestatic; Peripheral vascular disease; Splenomegaly; Superficial lymphadenopathy; Mononucleosis syndrome; Coughing.
MAANGLA	English	12.5	2	
MASTA08	Clinical placements	320	7	2 months
	Certificate First Aid / Sutures		0	
	TOTAL	510.5	26	

*Exams consist of different types of questionnaires (simple-choice, multiple-choice, etc.), taken at the end of each term. Please prioritise courses for the semester of your mobility, as the Faculty of Medicine cannot guarantee all courses in case of scheduling conflicts. **Evaluation : Continuous control and final exam.

Course catalogue for 5th year medical students

1st semester

Semester 1	DFASM2 – 5 th year medical studies - Nantes				
	Code	Module	Nb of hours	ECTS	Module content
	MAGYNP2	Gynaecology - Part 2	17.5	2	Contraception; Amenorrhea; Sterility of the couple; Medically Assisted Procreation; Menopause; Menstrual cycle anomalies; Pathologic and normal puberty; Tumours of ovaries and cervix; Breast pathologies; Fever; Infections and pregnancy; Endometrium cancer; Feminine sexual mutilations; Sexuality; Violence; Genital prolapse; Incontinency.
	MAPSYP2	Psychiatry - Part 2	18.5	2	Normal and pathological development at young children and young adults; Alcoholism; Addiction to smoking; eating disorders; Behaviour disorders; Addiction to cannabis; Psychostimulant and drugs; Addiction to opiates.
	MAPEOPH	Ophthalmology	13.5	1	Eyes and related pathologies: diabetes, hypertension, thyroid, multiple sclerosis; Eyelids; Glaucoma; Cornea; Cornea transplants; Examens and follow up of new-borns; Strabismus; Diplopia.
	MAPEORL	ENT	13.5	1	Cervical tumours, Dysphonia, Dysphagia, Epistaxis, Dyspnoea, Blocs of respiratory pathway, Cancers of upper aerodigestive tract.
	MAPESTO	Stomatology	11	1	Pancreatic tumours diagnostics; Proctologic pathologies and pelvis; Rectal and colon cancer treatments; Surgery and inflammatory diseases of the intestinal tract; Diverticulosis and complications.
	MASNEP2	Neurology - Part 2	14.5	1	Origin of neurological vision problems; Diplopia; Radicular pain; Canal syndrome; sleep disorders; Spinal traumatism; Physical therapy of spinal traumatism; Neurological origin of confusion syndromes; Dementia; Polyneuropathies; ALS; Facial paralysis; Migraine; Headache; Walking and balance troubles.
	MADERP2	Dermatology - Part 2	58.5	1	Vascular malformations and haemangiomas; Lupus; Sarcoidosis; Scabies; Pediculosis; Dermatitis bullous; Psoriasis; Epithelial tumours; Erythema; Exanthems; Erythrodermata.
	MAMTRP2	Infectious diseases - Sanitary risks - Part 2	25.5	2	Covid-19; Emerging diseases; Tuberculosis; Infections at migrants; Endocarditis; CNS infections; Travel recommendations; Infections with immunodeficiency; Hepatitis; Microbiological samples: parasitology, mycology.
	MAPOUP2	Pneumology - Part 2	10.5	1	Acute respiratory insufficiency; Chronical respiratory insufficiency; Asthma; Hemostasia; Syndrome of sleep apnoea; Interstitial pneumopathy.
	MACARP2	Cardiology - Part 2	13	1	Presentation; ECG; Troubles of cardiac rhythm; Palpitation; Atrial fibrillation; Ablation; Defibrillator; Cardiac insufficiency: epidemiology, clinical aspects, aetiologies, treatment; Acute heart failure; Care pathway; Clinical cases; Medication on heart failure; Valvopathies: surgery and screening; ECG in practice.
	MAENUP2	Metabolism: Endocrinology / Nutrition - Part 2	13.5	1	Hypoglycaemia; Insufficiency adrenal; Hypophysial adenoma; Gynecomastia; Malnutrition and weight loss; Thyroid (hyper/hypo, nodules, cancer, goitre); Troubles of alimentation at young adults.
	MANEPP2	Metabolism: Nephrology	15.5	2	Glomerular nephritis; Diabetics nephropathy; Myeloma; Kidney and pregnancy; Tubulo-interstitials nephropathy; Vascular nephropathy; Revision session.
	MAMEDP2	Pharmacology - Part 2	33.5	3	Psychotropics; NSAIDs; Glucocorticoids; Pain treatment; Medicaments in gynaecology-obstetrics; Substitution of opioids; Prescription for the pregnant women and for the breast-feeding women; Anticancer medicaments; Antituberculosis; Antifungals; Antiparkinsonians; Antiepileptics; Phosphocalcic metabolism medicaments; Treatment of polyarthrititis. Principles of integrative medicine; Acute kidney disorder; Iatric pathology during therapy; Patient treatment pathway between hospital and town; acute confusion state.
	MASTA09	Clinical placements	320	7	2 months
		TOTAL	578.5	26	

*Exams consist of different types of questionnaires (simple-choice, multiple-choice, etc.), taken at the end of each term. Please prioritise courses for the semester of your mobility, as the Faculty of Medicine cannot guarantee all courses in case of scheduling conflicts.

2nd semester

DFASM2 – 5 th year medical studies - Nantes				
Code	Module	Nb Hours	ECTS	Module content
MAPEDP2	Paediatrics - Part 2 **CC	33.5	3	Proteinuria; Syndrome nephritic; Haematuria; Acute kidney insufficiency; Chronic kidney diseases; Urinary troubles; Hypertension; Cough; Mucoviscidosis; Tuberculosis; Hemograms; Anaemia; Transfusion; Pathology of iron; Purpura; Haemorrhage; Adenopathy; Cancer and leukaemia at child; Immunodeficiencies; Asthma; Intrathoracically shadows; Hypersensitivities; Allergies; Anaphylactic shock; Sleeping disorders; Cefalias; Epilepsy; Cardiopulmonary arrest; Sepsis; Emesis; Gastric reflux; Diarrhoea; Constipation; Fractures; Orthopaedics; Abdominal and pelvic pain; Hernia; Cardiac murmur; Dyspnoea et acute respiratory distress; Intoxications; Cranial traumas; Alimentation problems and weight loss; Suicidal behaviour; Stunted growth; Hypo thyroiditis; Normal and pathological puberty; Insufficiency of adrenal glands; Diabetes; Hypoglycaemia; Handicap.
MAVIEP2	Geriatrics	15	2	Cognitive troubles Part 1 and 2; Troubles related to walking and balance; Autonomy and dependence of the elderly.
MASANTR	Health management at work place	11.5	1	Evolution of health care at work; Clinical cases
MAIMMP2	Inflammation – Immunopathology	17.5	2	Lupus and APS; Lupus nephropathy; Complications of transplants; Allergies.
MACVAP2	Vascular system - Part 2	9.5	1	Acro syndromes; Acute Ischaemia; Factors of arterial risks; Ulcers of legs; Arteritis.
MAHGEP2	Gastroenterology - Part 2	21.5	2	Colorectal cancer: screening, testing, diagnosis; Acute and chronic diarrhoea; Malnutrition of adults; Acute and chronic pancreatitis; Dysphagia; IBD; Crohn; Stomach cancer; Diagnostic of pancreatic tumour; Proctological pathologies; Rectal and colon cancers; Surgery of different aspects of inflammatory diseases of intestines; Diverticulosis and complications.
MAELPB3	Oncology	13.5	1	Epidemiology, Risk factors, Carcinogenesis; Cancer treatment; Cancer diagnostics; Patients' care and support; Epidemiology, Risk factors, Carcinogenesis; Cancer treatment; Cancer diagnostics; Patients' care and support.
MAEPB4	Haematology	16.5	1	Myelodysplasia syndromes, Leukaemia, Waldenström, Multiple myeloma of bones, Maligns lymphomas, Myeloproliferative syndromes, Biotherapies and target therapies. Haemorrhagic syndrome; Antithrombotic treatment, Anticoagulant accidents; Iron pathology in adults and children; Anaemia in adults and children; Thrombocytopenia and purpuras in adults and children; Mononucleosis syndrome, Eosinophilia; Superficial lymphadenopathy in adults and children; Splenomegaly
MAURGP2	Emergency - Part 2	15.5	2	Complication evaluations; Acute urine retention; Acute kidney insufficiency; Anuria; Acid basis; Antibiotic therapy in urinary and respiratory infections; Non traumatic comatic state at adults and children; Confusion state and trouble of conscience at adults and children.
MALCAP2	Critical Analysis of Medical Articles	12	2	
MALOCP2	Musculoskeletal system - Part 2	13.5	2	Articular pain and effusion; Arthritis; Osteoarticular infections; Osteopathy; Hypercalcemia; Acute infections of medullar parts; Prothesis and osteosynthesis; Frequent fractures of adult and elderly; Primitives bone tumours; Secondary bone tumours; Biotherapies; Entrapments syndrome.
MAODIP2	Diagnostics - Part 2	12.5	1	Purpura at child and adults; Weight loss; Haematuria; Eosinophilia; Pain in extremities; Oedema in legs; Anaemia; Pathology of coagulation; Inflammation.
MASTA10	Clinical placements	320	7	2 months
	TOTAL	512	27	

*Exams consist of different types of questionnaires (simple-choice, multiple-choice, etc.), taken at the end of each term. Please prioritise courses for the semester of your mobility, as the Faculty of Medicine cannot guarantee all courses in case of scheduling conflicts. **Evaluation : Continuous control and final exam.

A state-of-the-art, modern and welcoming hospital



A new university hospital will open in 2027. The construction of a new hospital in Nantes is an ambitious project to serve the health of the people of Nantes.

By 2027, the new hospital will bring together, on a single site, short-stay activities (medicine, surgery, obstetrics) requiring access to a high-level technical platform and a Health Research Institute (IRS 2020). Its construction represents a unique opportunity to build a place of care, teaching and research that **lives up to the ambitions of the medicine of tomorrow**. It will offer both patients and professionals **a modern, connected, ecological and comfortable environment**.

You can have a preview of the new hospital here: <https://www.nouvelhopital-chu-nantes.fr/>



International Relations Office

Faculty of Medicine

<https://medecine.univ-nantes.fr/relations-internationales>

univ-nantes.fr